



**DEPARTMENT OF
EAR, NOSE & THROAT (ENT)**

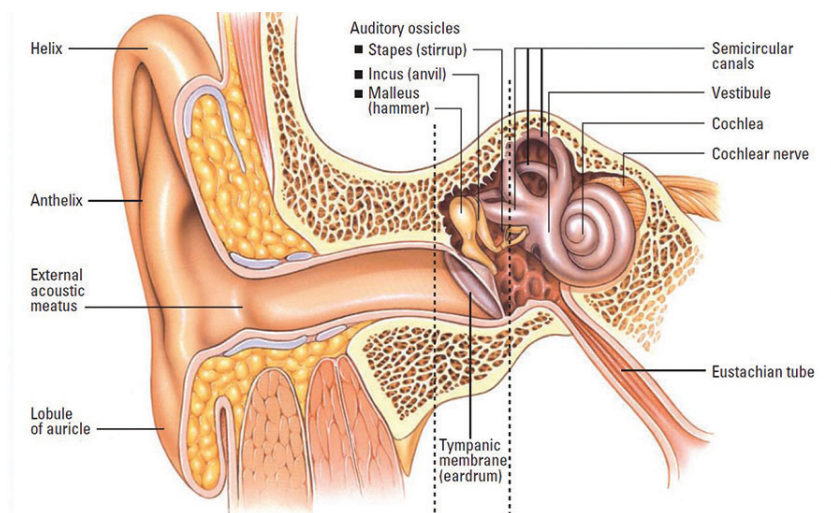
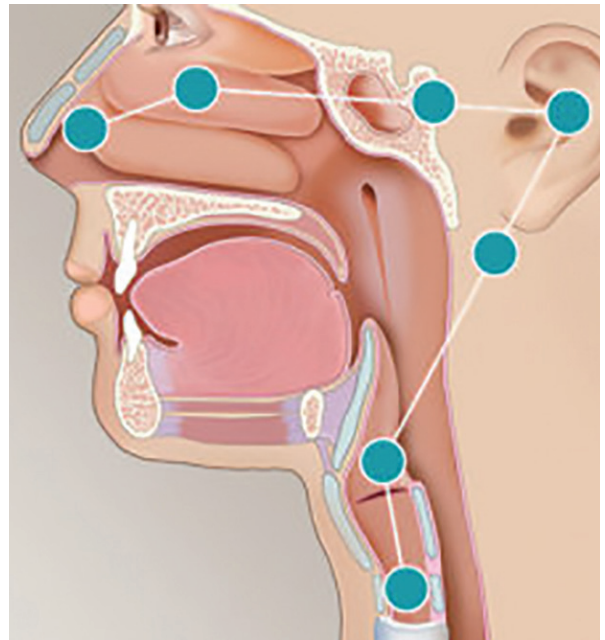
The ear, nose and throat are vital sensory organs that are connected to one another. The treatment of ENT disorders demands focused expertise.

The department manages diseases of the Ear, Nose, Throat, Head and Neck. SIMS brings you cutting-edge ENT care backed by a team of highly qualified ENT surgeons and audiologists.

OTOLOGY

Diseases of the ear can range from very trivial like wax to even life threatening like skull base osteomyelitis.

Surgeries commonly done: Cortical Mastoidectomy, Modified Radical Mastoidectomy, Stapedectomy, Grommet insertion, Sub-Total Petrosectomy



COCHLEAR IMPLANT

Hearing is a crucial sense that enables communication between humans. For babies born with hearing loss and in adults who have lost their hearing completely due to infections in the brain - cochlear implant is done. In this advanced surgery a device is placed inside the ear, a device that converts sound into electrical impulses and sends it to the hearing nerve.

BALANCE DISORDERS

Giddiness can be caused by many factors - problems in the ear form a significant proportion of these. Proper diagnosis is required to treat the patient appropriately. Through clinical examination and modern vestibular laboratory tests, proper cause for vertigo will be diagnosed and treated accordingly. The department also provides instructions to the patients regarding necessary Vestibular Rehabilitation Exercises . In rare cases, surgery may be required.



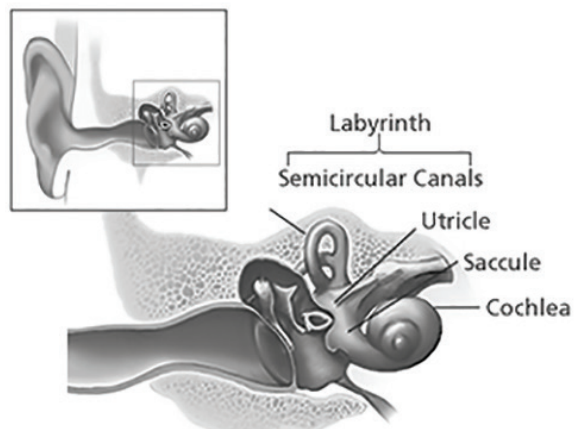
HEAD & NECK SURGERY

Swellings caused by benign and malignant tumours in the head and neck region are treated by surgery as appropriate. Common surgeries done are hemi thyroidectomy, total thyroidectomy, parotidectomy, submandibular gland excision. Surgery is also done for some hidden areas like infra temporal fossa tumours which are difficult to reach.

Surgeries for malignancy performed - Parotid malignancies, Laryngeal malignancy(Laryngectomy) , Thyroid malignancy

RHINOLOGY

Sinusitis and allergy are common problems endured by people. We offer solutions through treatment and management of sinusitis, nasal block and allergies. Our expert surgical team performs both simple nasal



endoscopic procedures & removal of polyps, as well as complex surgeries and expert allergy management. Common surgeries done are FESS, septoplasty, excision of benign and malignant nasal tumours, correction of nasal bone fractures and other injuries

ADVANCED ENDOSCOPIC & SKULL BASE SURGERY

CSF rhinorrhoea: Fluid from the brain can leak from the nose due to injury or other causes. Endoscopic surgery is done to repair the leak and save the patient from potential life threatening complications. Pituitary gland situated deep inside the brain is easily approached through the nose. Along with the neurosurgery department, pituitary tumours are managed by endoscopic surgery.

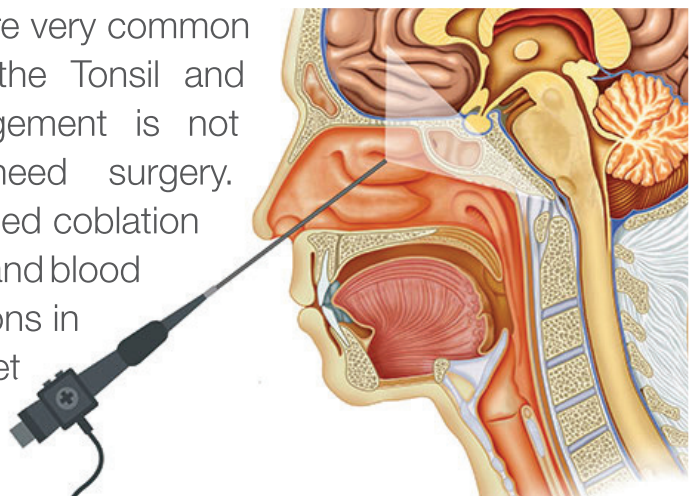
Blockage of the tear flow from the eye and infection of the sac holding the tears may need surgery. Endoscopic DCR which is a scarless surgery is done to cure this.

SNORING & SLEEP APNEA

Snoring can just be an uncomfortable sound to family members; sometimes it can be obstruction to breathing. Sleep Apnea, if it is severe and left untreated, can cause serious complications in the long run. We assess by tests like Sleep Study and Sleep Endoscopy. After this assessment, the management is planned - whether simple reduction in weight or Snoring or OSA surgery.

PEDIATRIC ENT

In childhood, ENT infections are very common especially those relating to the Tonsil and Adenoids. If medical management is not effective, children might need surgery. Surgery is done by the advanced coblation technique to minimize the pain and blood loss for the patient. Ear infections in childhood may require Grommet insertion or occasionally mastoid surgery.



ORAL CAVITY, LARYNGOLOGY & PHONOSURGERY

Throat infections are very common in children and adults. Infections around the tongue and jaw can also happen. Most of these are managed by medical treatment but rarely surgery may be needed.

Problems in the Vocal cords are very common especially in professional voice users. In addition, tumours due to smoking and other causes can occur in the vocal cords. Early diagnosis and treatment is crucial. Surgery like Laryngectomy are done for advanced cancers. Tracheostomy or an opening in the neck for breathing is done for ICU patients who need prolonged ventilator support and for some cancers in the throat.

COBLATION

It is an advanced technique which minimizes pain and blood loss. It is commonly used for tonsil surgery and adenoid surgery. It can also be used for treatment of nasal allergy when not responding to even long term medical treatment. Coblation is also useful in precise removal of tumours from the oral cavity, throat and vocal cords.

AUDIOLOGY - BASIC & ADVANCED

Basic tests to detect diseases of the ear and problems in hearing are done. Pure Tone Audiogram, Impedance, New born hearing screening, BERA are some of the tests done in the department

SPEECH ASSESSMENT & THERAPY

Speech disorders ranging from stammering to loss of speech due to stroke need assessment and appropriate therapy to get them back to speaking normally.

VOICE ASSESSMENT & THERAPY

Voice problems can happen to professional voice users, those who abuse their voice and in some medical conditions. Proper assessment and therapy customized for them will help them in recovering their voice.

SWALLOWING ASSESSMENT & THERAPY

Patients with stroke and other neurological issues, have difficulty in swallowing. They need to be assessed with endoscopy and therapy started to enable them to swallow normally.



345 Bedded Super Specialty Hospital in a Central Location

Institutes Centric Patient Care

State of the Art Imaging and Lab Services

Best in Class - 15 Modular Operating Rooms

7 Specialty Centric ICU's

Specialized Day Surgery Unit: Surgery Today & Home Today

24x7 - 21 Bedded Accident and Emergency unit with

Specialized Protocols for Trauma & Medical Emergencies

SIMS HOSPITAL

#1, Jawaharlal Nehru Salai, Vadapalani, Chennai - 26

044 2000 2001 / 2000 2020 • www.simshospitals.com